

COVID-19

England 2020 – Factbook. 31st Dec 2020

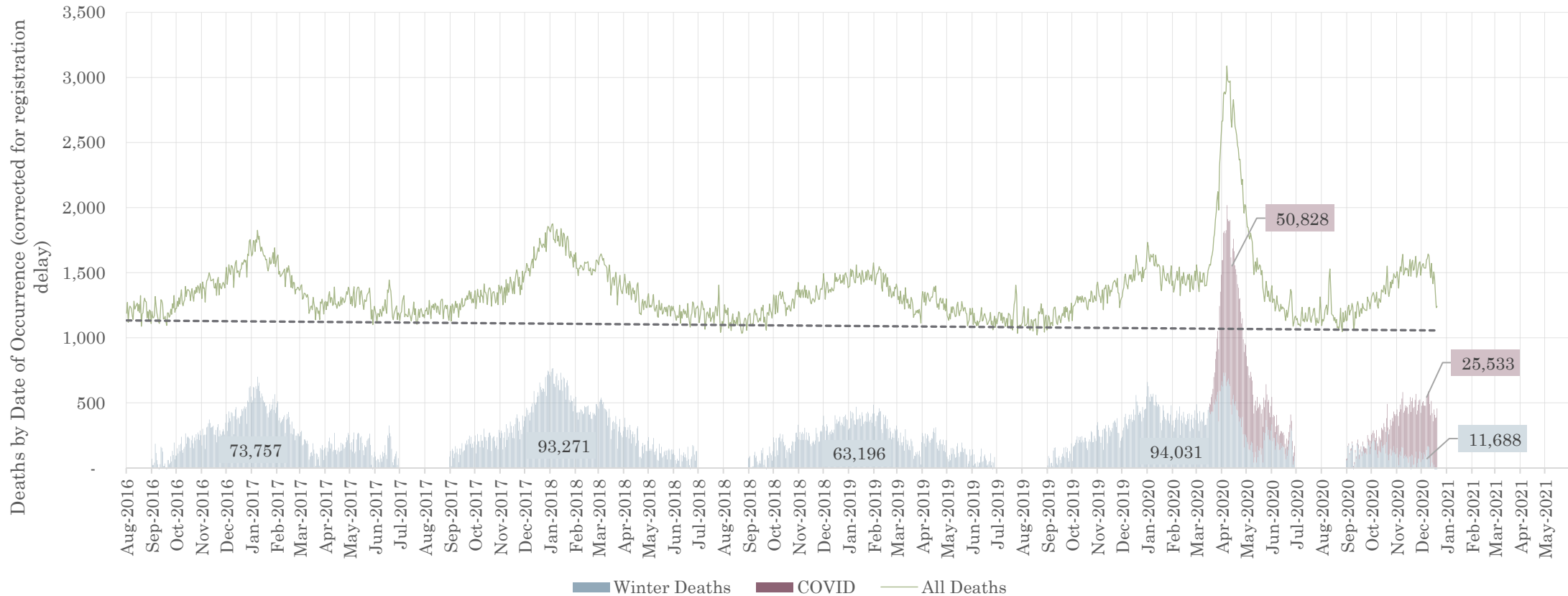
Joel Smalley, MBA, Quantitative Analyst

Marie Oldfield, CStat, CSci, Statistician

The COVID epidemic ended in Spring

The COVID epidemic in England lasted 12 weeks in Spring just like most epidemics. COVID is now endemic which means it does not cause any more death than other winter viruses. But, in a very peculiar turn of events, non-COVID winter deaths are now actually negative, such has been the displacement or misdiagnosis.

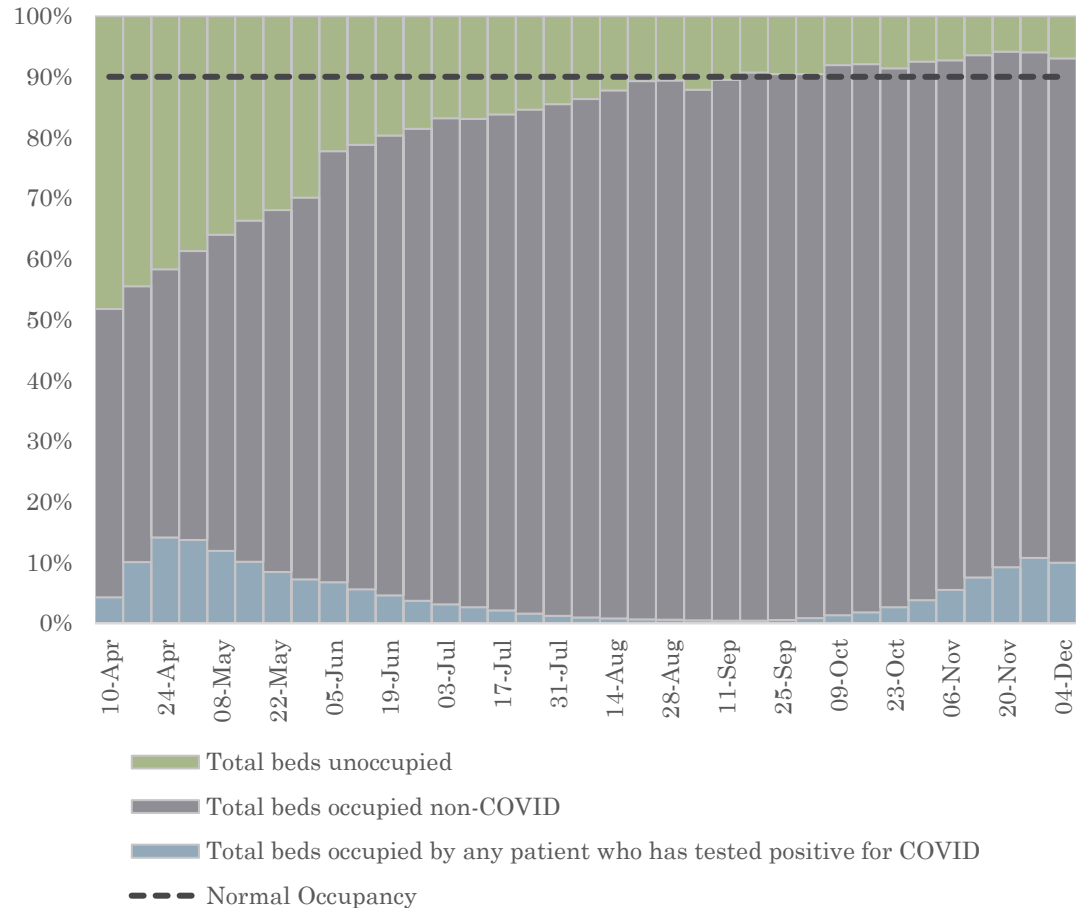
Winter Deaths, England 2020
Source: Public Health England



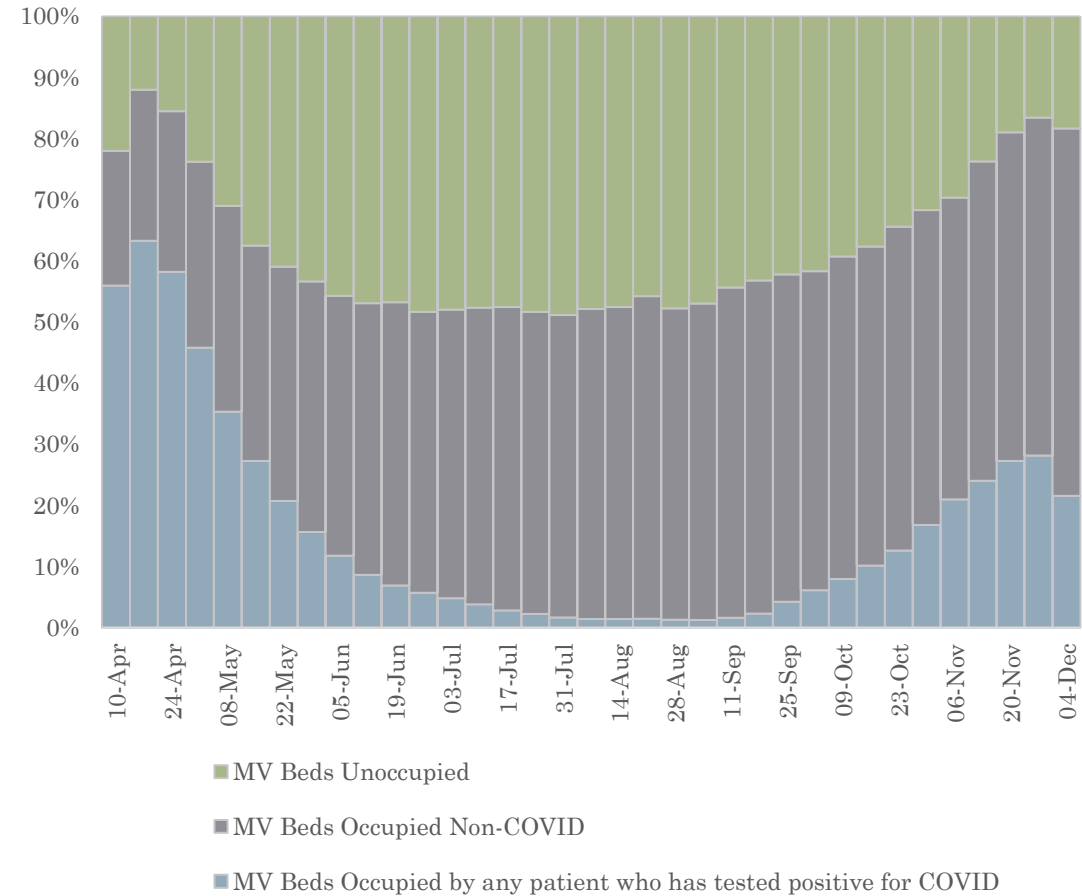
Hospitals are not overwhelmed with COVID patients

Hospital bed occupancy across the whole country has recently exceeded normal occupancy but patients who have tested positive for COVID play a relatively small part.

Hospital Bed Occupancy, England, 2020
<https://www.england.nhs.uk/statistics>



Hospital Mechanical Ventilation Bed Occupancy, England, 2020
<https://www.england.nhs.uk/statistics>

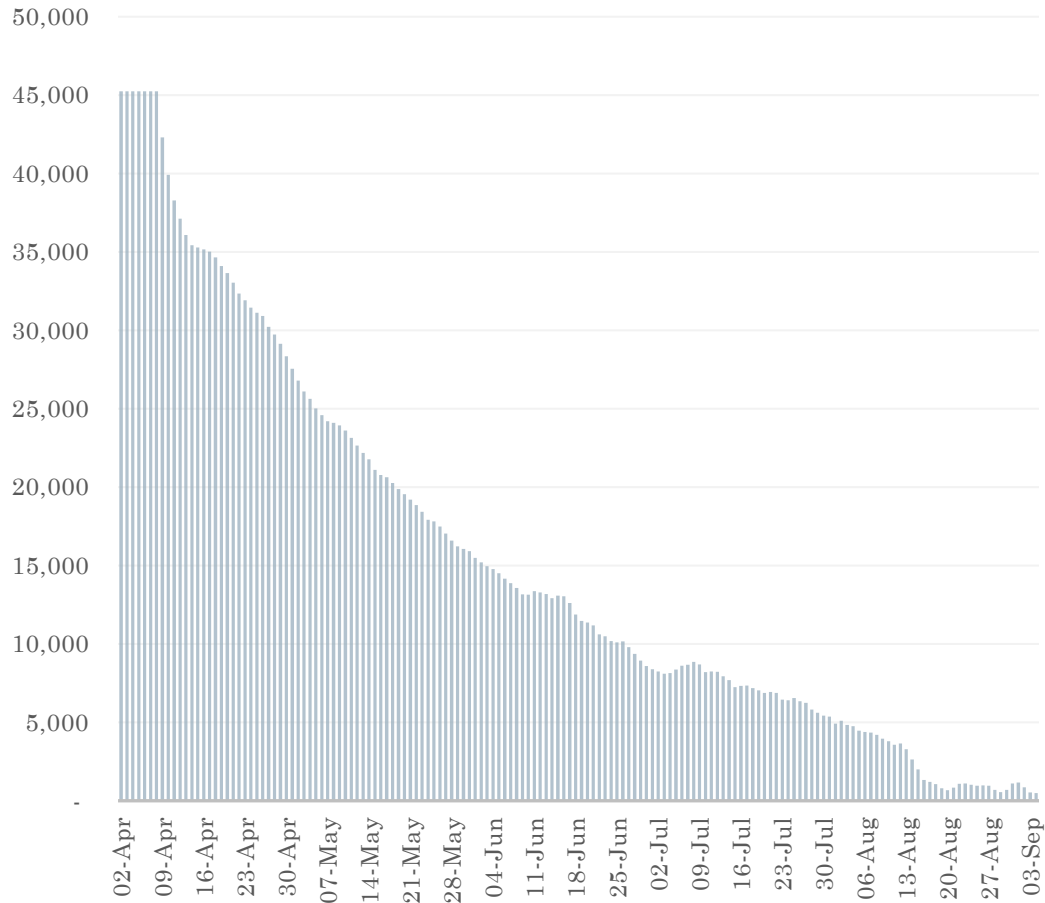


Hospitals are catching up

2.4 million fewer bed days and 3.9 million fewer finished consultant episodes means there is a lot of catching up to do.

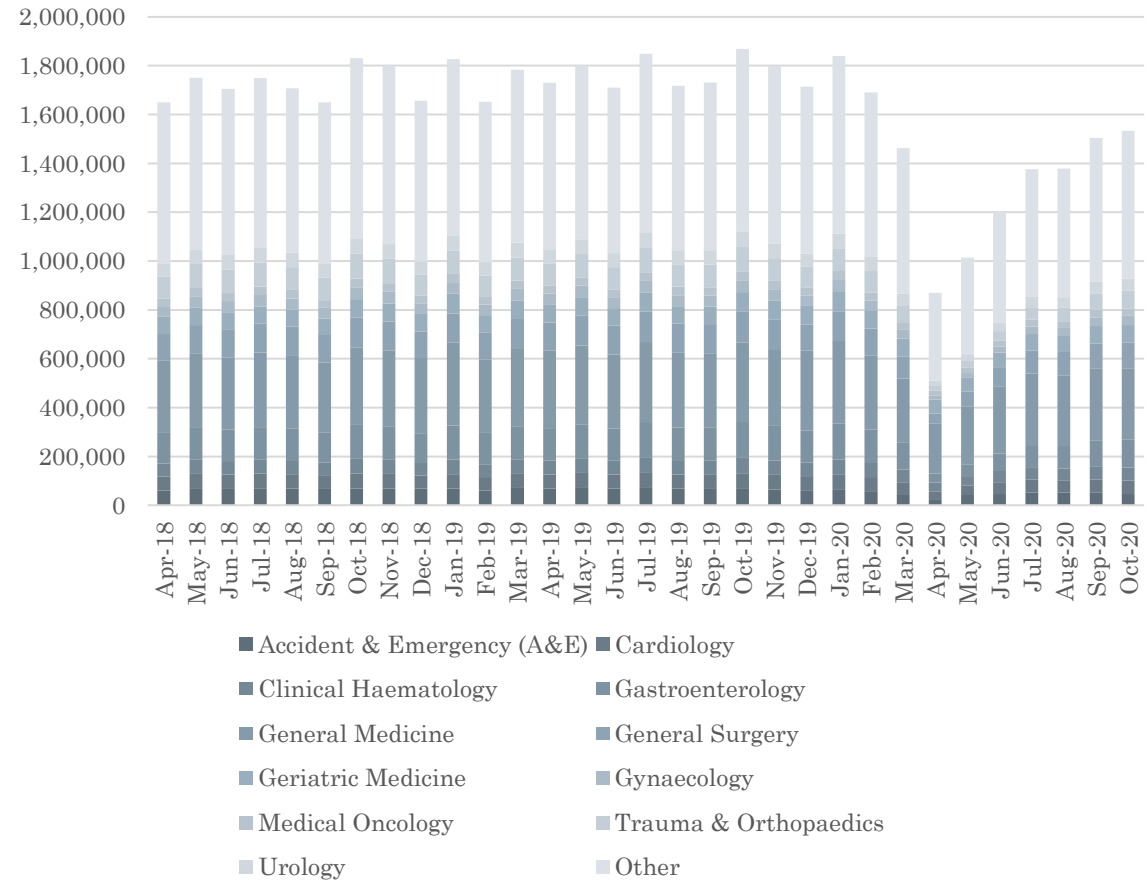
English Hospitals Lost Bed Occupancy

<https://www.england.nhs.uk/statistics/statistical-work-areas/covid-19-hospital-activity/>



Finished Consultant Episodes for NHS England

<https://digital.nhs.uk/data-and-information/publications/statistical/hospital-episode-statistics-for-admitted-patient-care-outpatient-and-accident-and-emergency-data/april-2020--october-2020>



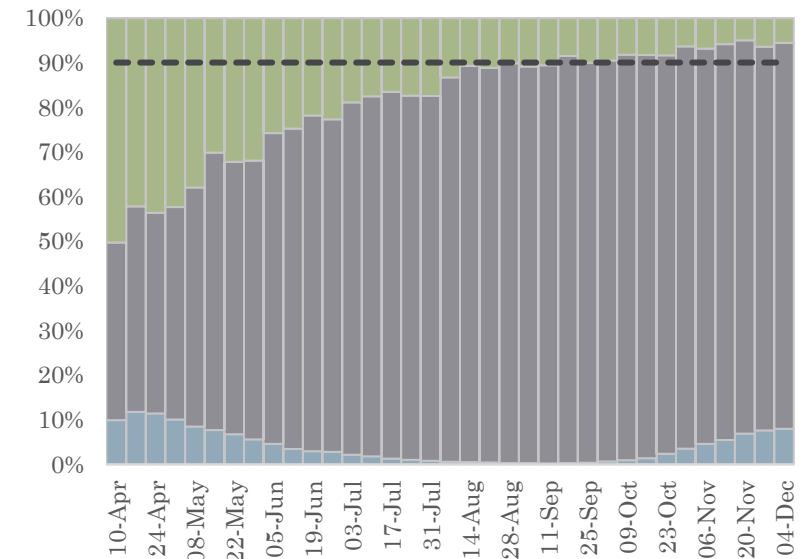
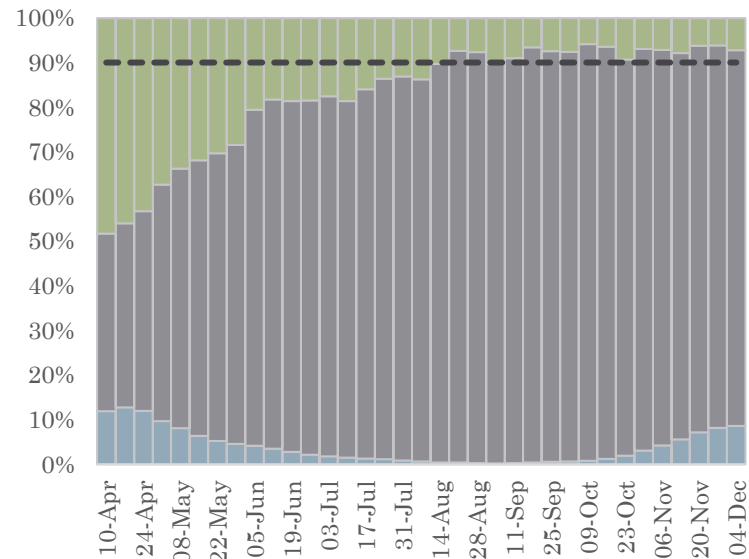
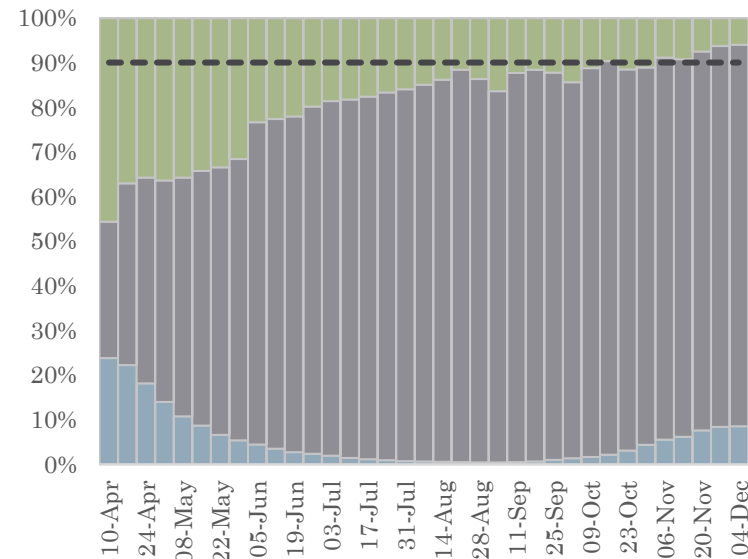
There are no regional differences overall

Even as patients admitted to hospital with a positive test have risen in all regions, there has been no real impact on hospital beds because COVID is simply replacing other winter illnesses.

Hospital Bed Occupancy, London, 2020
<https://www.england.nhs.uk/statistics>

Hospital Bed Occupancy, South East, 2020
<https://www.england.nhs.uk/statistics>

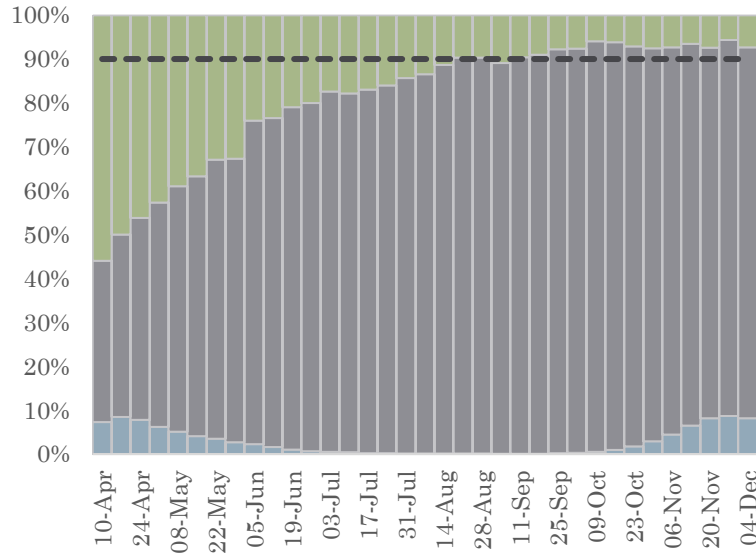
Hospital Bed Occupancy, East of England, 2020
<https://www.england.nhs.uk/statistics>



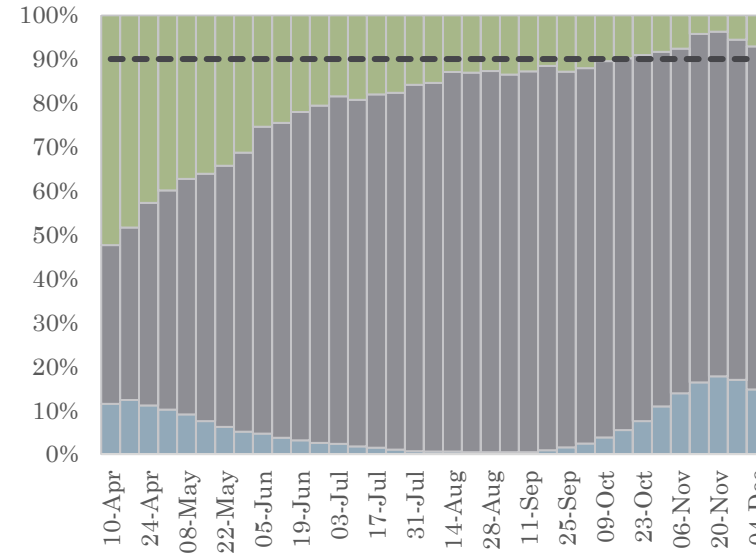
■ Total beds occupied non-COVID
■ Total beds unoccupied

■ Total beds occupied by any patient who has tested positive for COVID
- - - Normal Occupancy

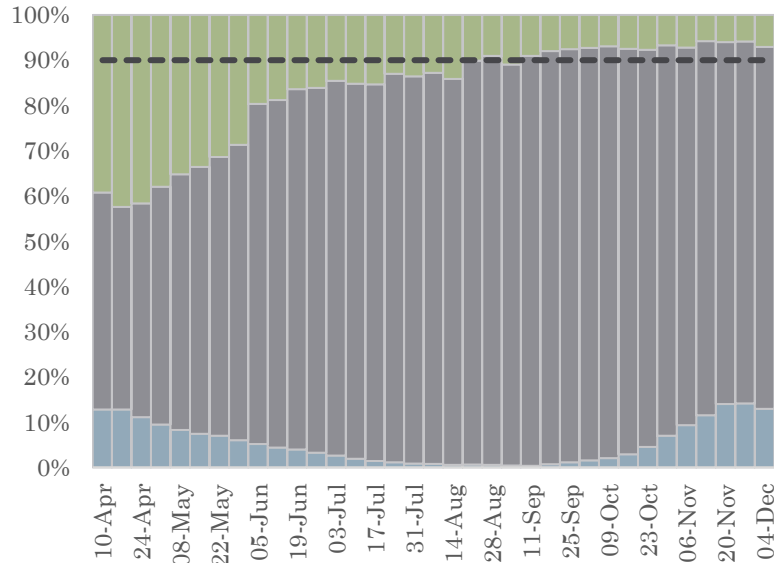
Hospital Bed Occupancy, South West, 2020
<https://www.england.nhs.uk/statistics>



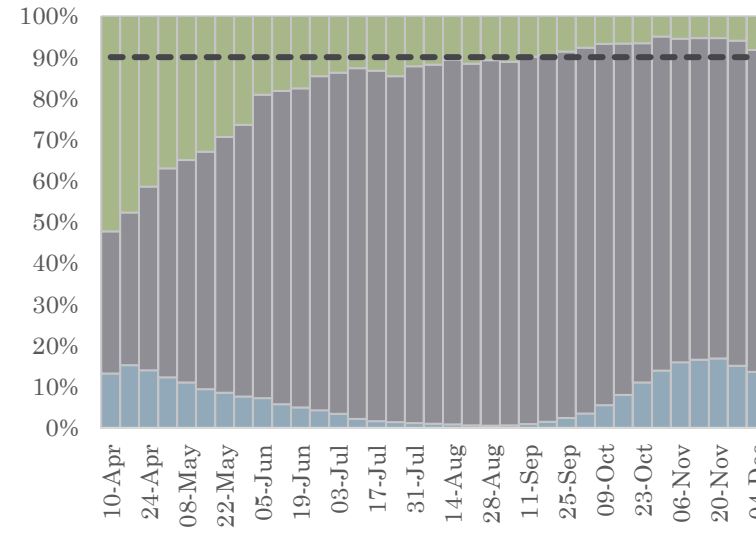
Hospital Bed Occupancy, North East & Yorkshire, 2020
<https://www.england.nhs.uk/statistics>



Hospital Bed Occupancy, Midlands, 2020
<https://www.england.nhs.uk/statistics>



Hospital Bed Occupancy, North West, 2020
<https://www.england.nhs.uk/statistics>

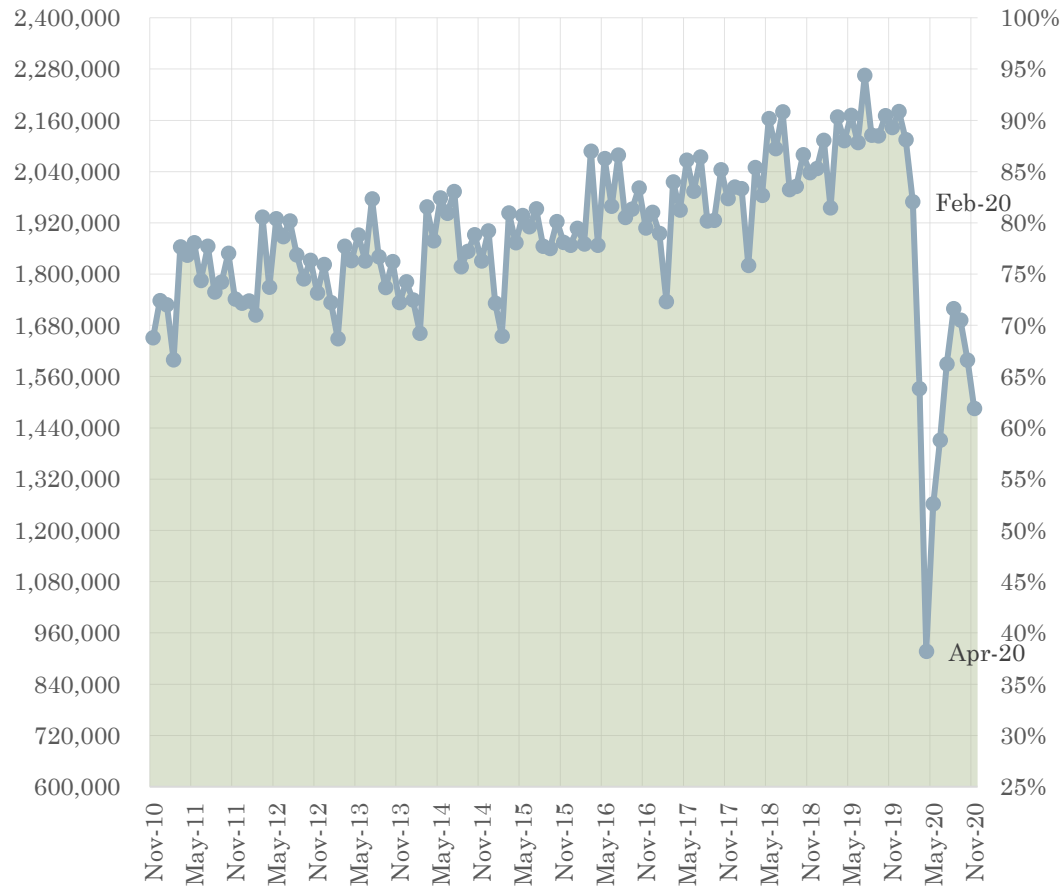


- Total beds unoccupied
- Total beds occupied by any patient who has tested positive for COVID
- Total beds occupied non-COVID
- Normal Occupancy

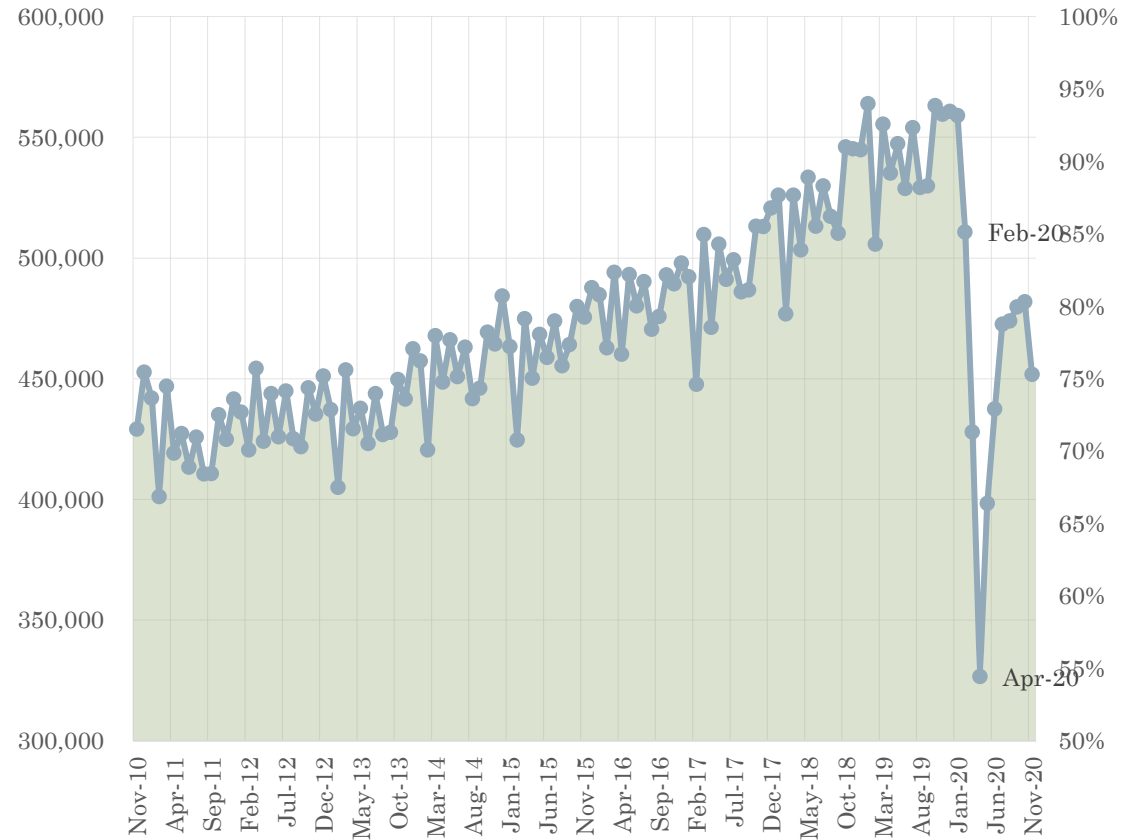
Emergency Department Activity

Attendances at the Emergency Departments are substantially below normal levels, suggesting hospitals are full with elective patients.

A&E Attendances NHS and independent sector organisations in England
<https://www.england.nhs.uk/statistics/statistical-work-areas/ae-waiting-times-and-activity/ae-attendances-and-emergency-admissions-2020-21/>

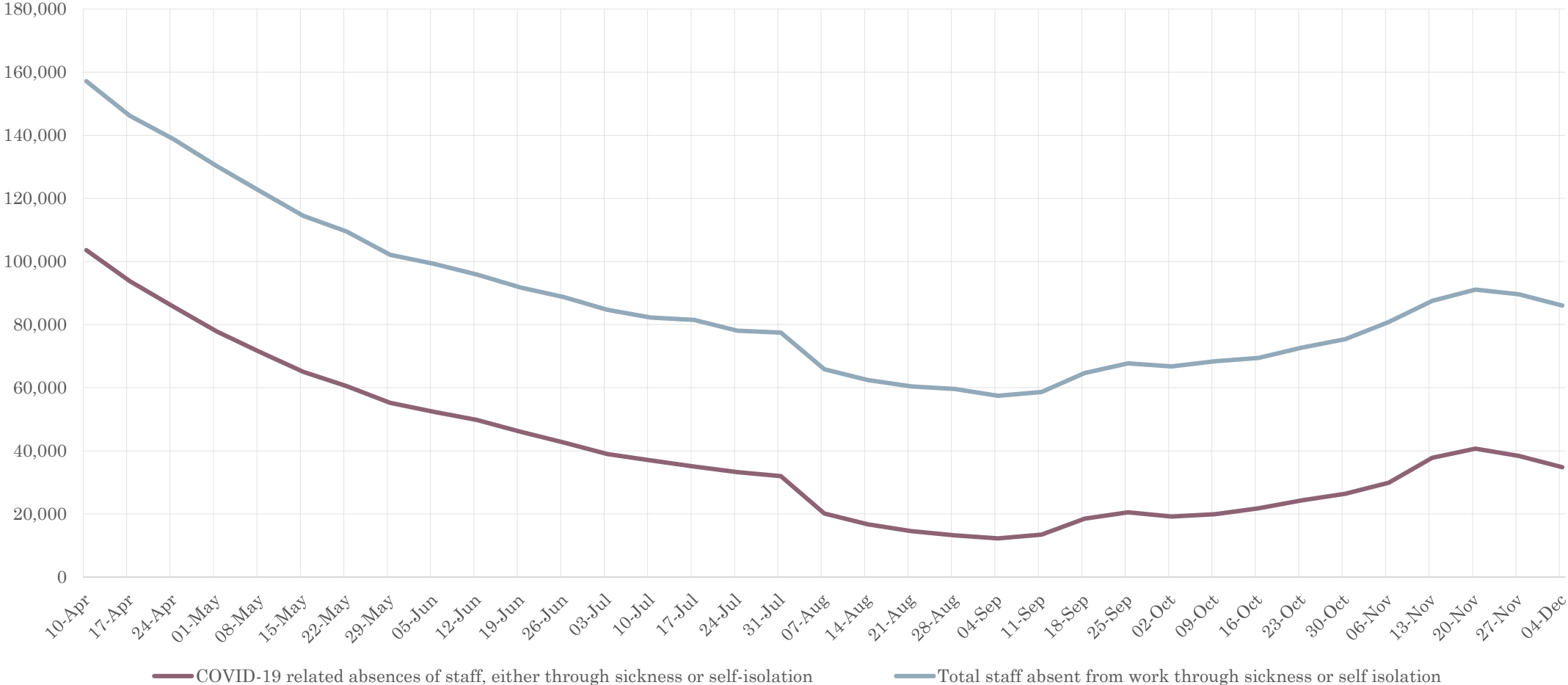


Emergency Admissions NHS and independent sector organisations in England
<https://www.england.nhs.uk/statistics/statistical-work-areas/ae-waiting-times-and-activity/ae-attendances-and-emergency-admissions-2020-21/>



NHS Staff Absence is Dominated by COVID-19

Total number of NHS staff absent from work through sickness or self isolation
<https://www.england.nhs.uk/statistics>



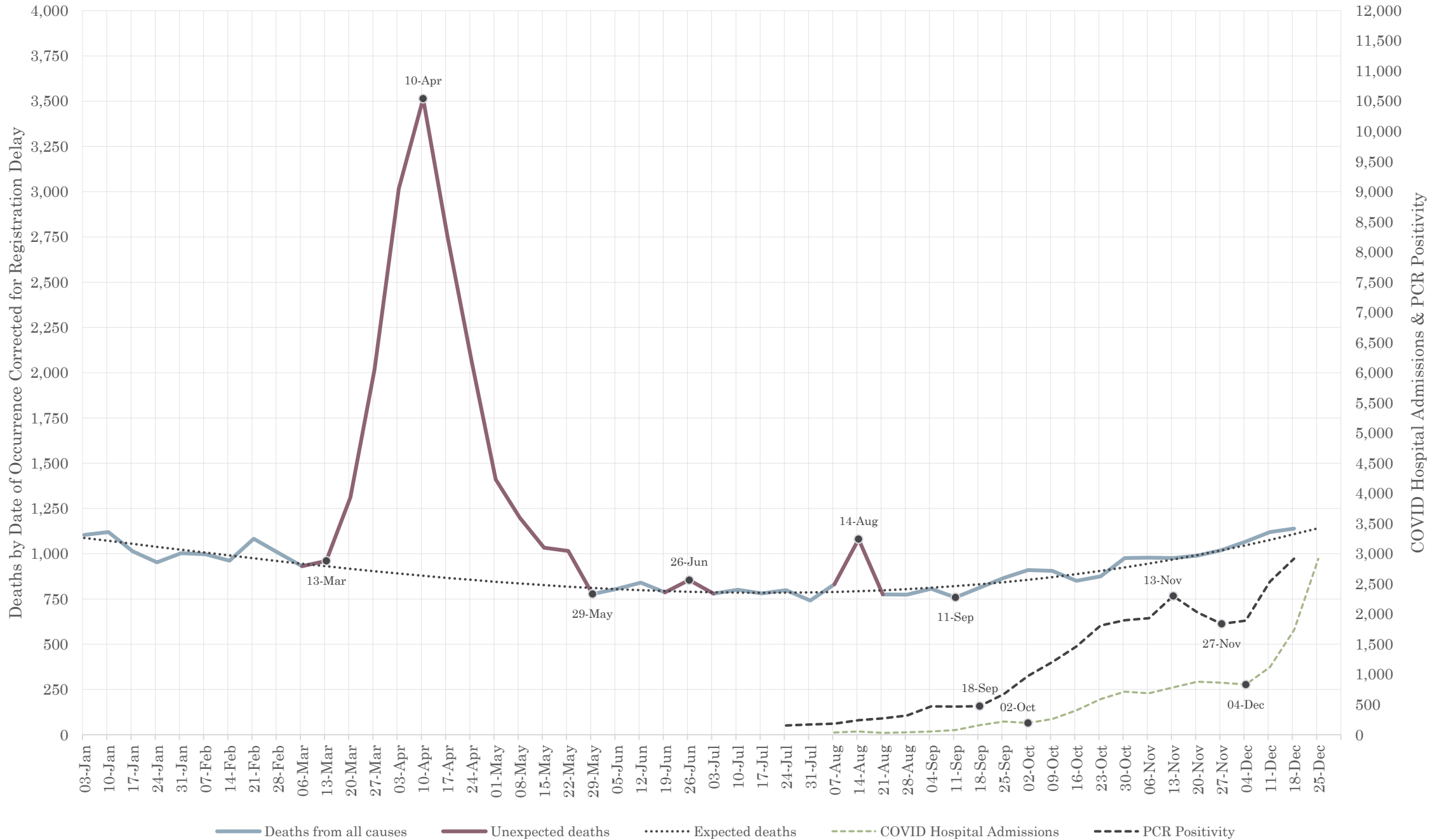
Winter Excess Deaths are Localised

South of the Midlands, there are no significant excess deaths, further confirmation that COVID is simply replacing other causes of winter mortality.

In the more remote Midlands, North West, North East and Yorkshire, there are isolated periods of excess death representing the residue of the epidemic.

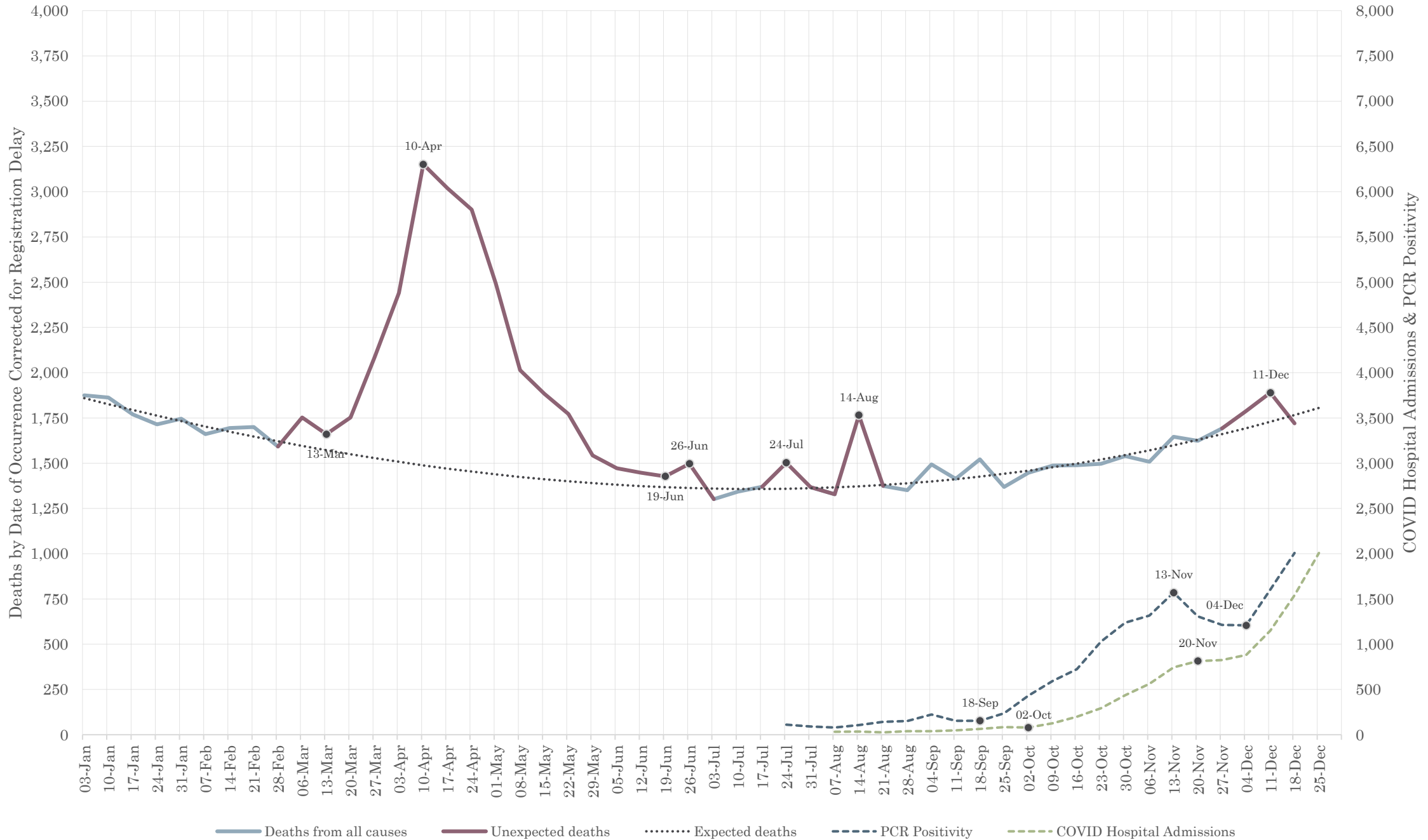
All-cause mortality, London, 2020

<https://www.ons.gov.uk/peoplepopulationandcommunity/healthandsocialcare/causesofdeath/datasets/deathregistrationsandoccurrencesbylocalauthorityandhealthboard>



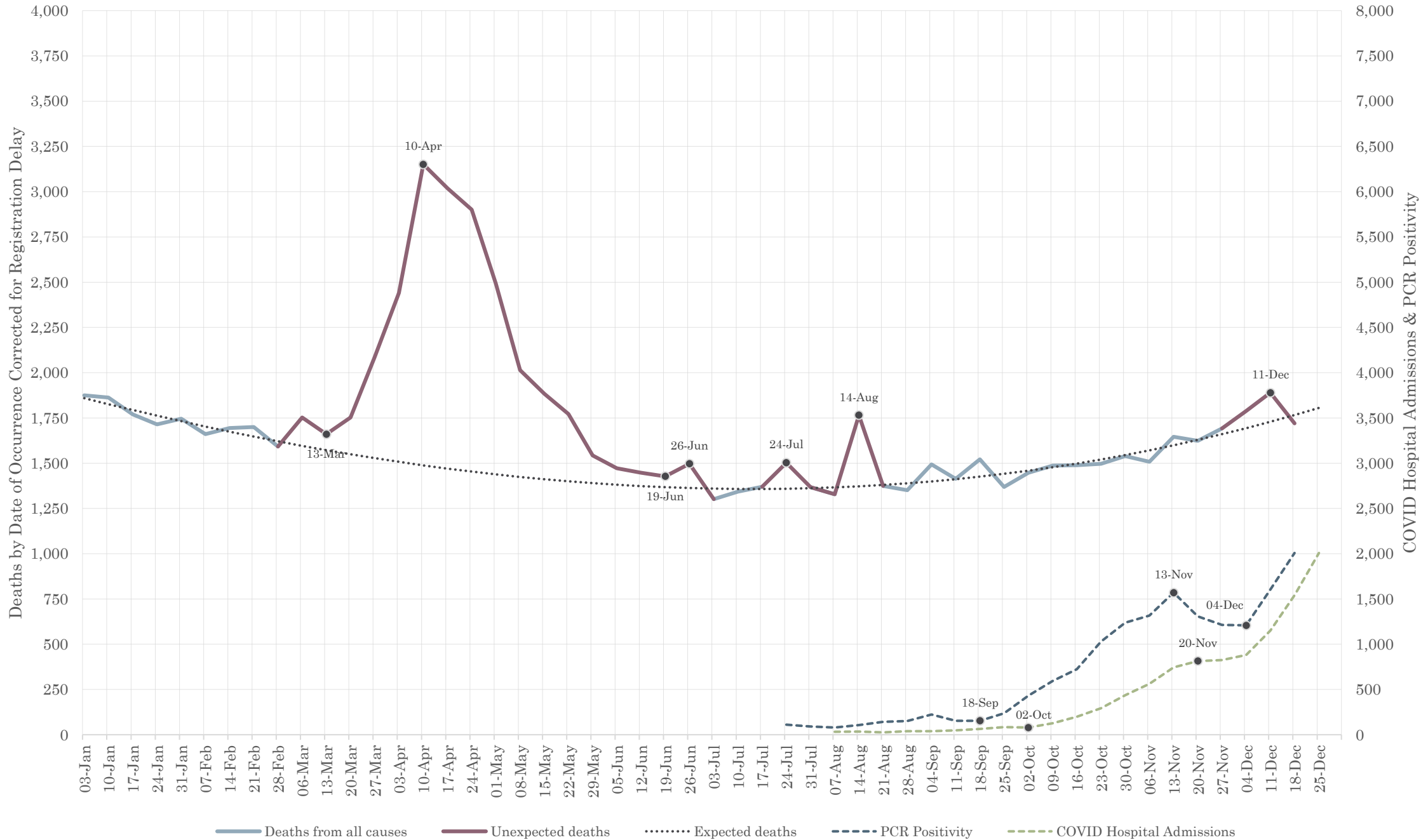
All-cause mortality, South East, 2020

<https://www.ons.gov.uk/peoplepopulationandcommunity/healthandsocialcare/causesofdeath/datasets/deathregistrationsandoccurrencesbylocalauthorityandhealthboard>



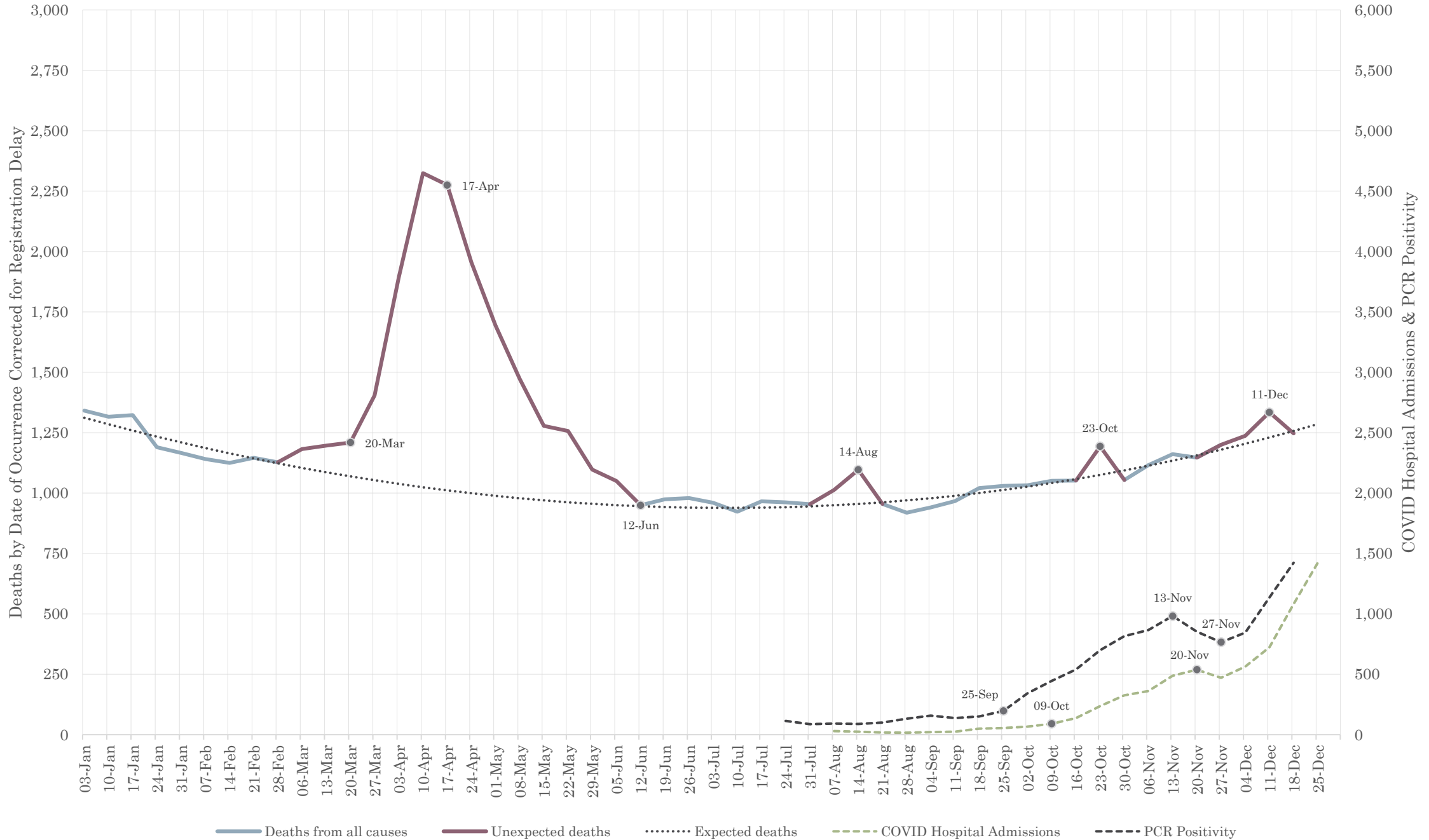
All-cause mortality, South East, 2020

<https://www.ons.gov.uk/peoplepopulationandcommunity/healthandsocialcare/causesofdeath/datasets/deathregistrationsandoccurrencesbylocalauthorityandhealthboard>



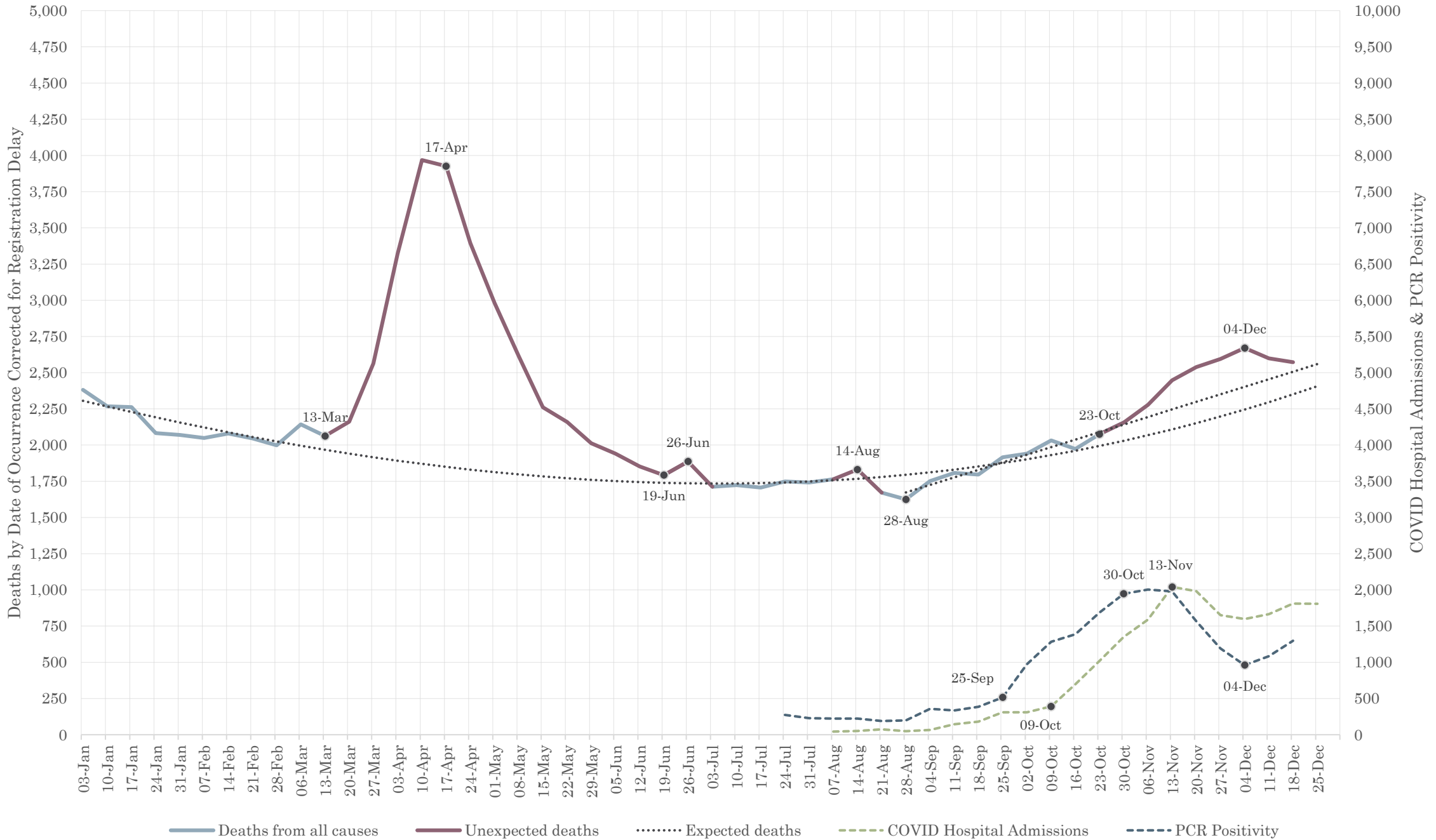
All-cause mortality, East of England, 2020

<https://www.ons.gov.uk/peoplepopulationandcommunity/healthandsocialcare/causesofdeath/datasets/deathregistrationsandoccurrencesbylocalauthorityandhealthboard>



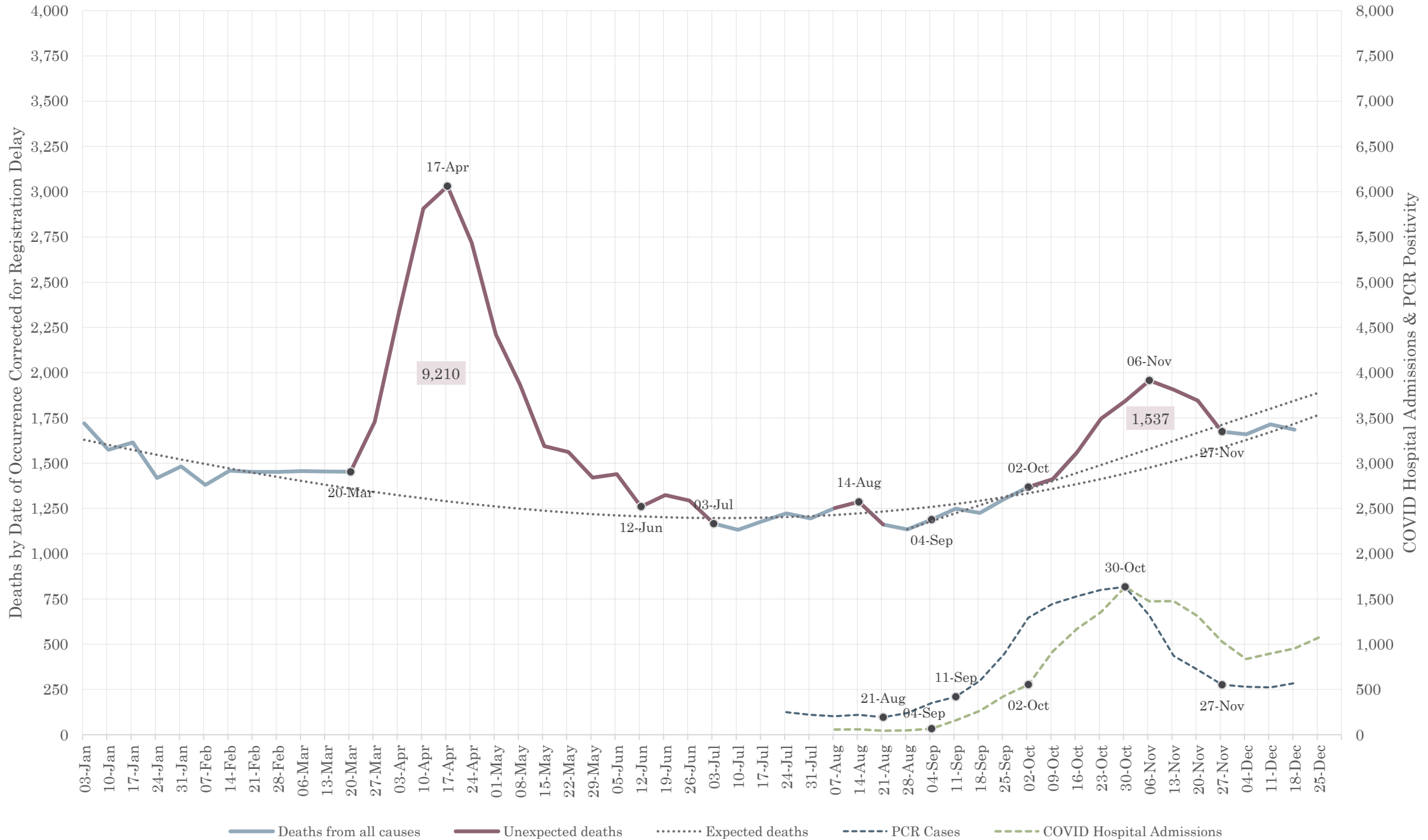
All-cause mortality, Midlands, 2020

<https://www.ons.gov.uk/peoplepopulationandcommunity/healthandsocialcare/causesofdeath/datasets/deathregistrationsandoccurrencesbylocalauthorityandhealthboard>



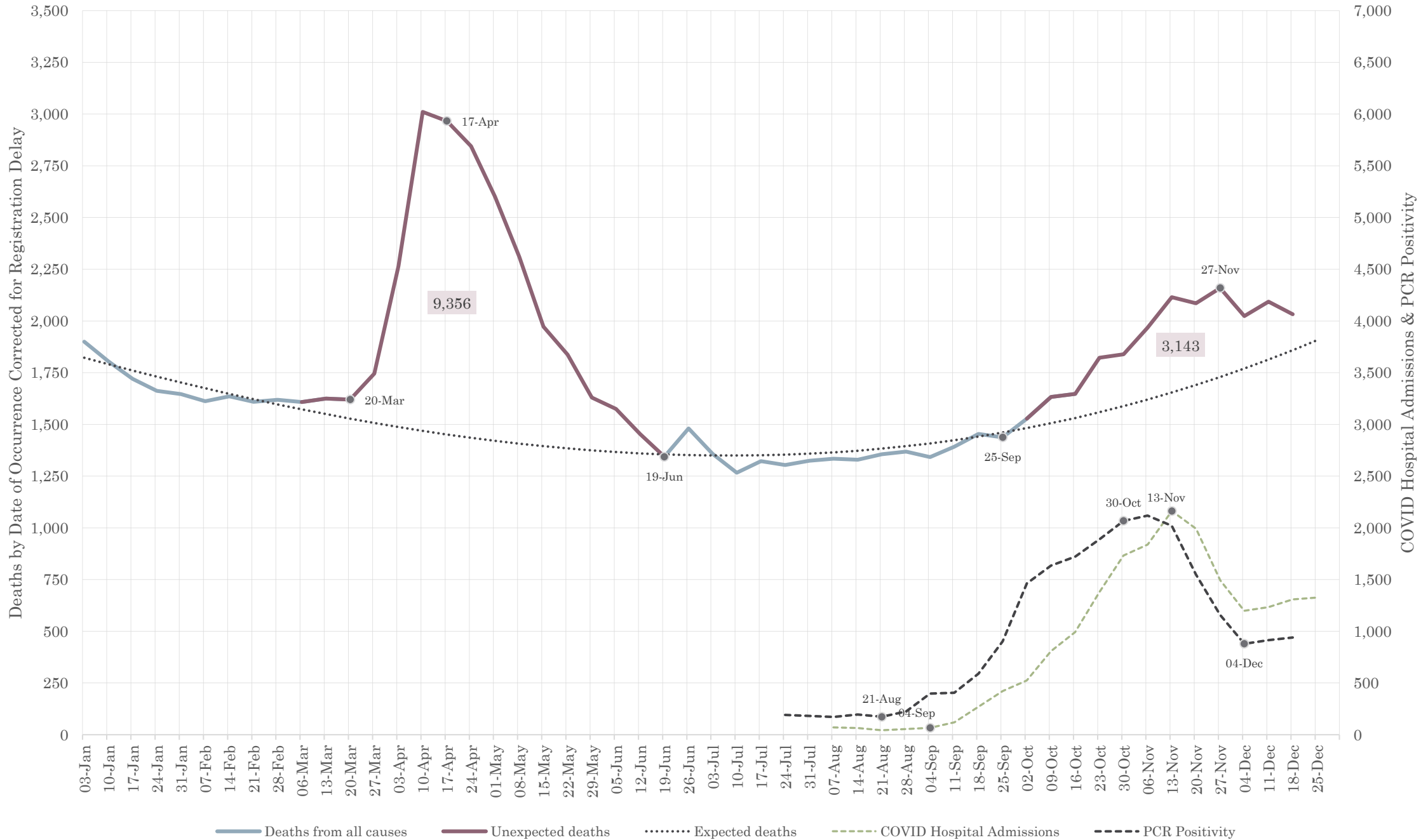
All-cause mortality, North West, 2020

<https://www.ons.gov.uk/peoplepopulationandcommunity/healthandsocialcare/causesofdeath/datasets/deathregistrationsandoccurrencesbylocalauthorityandhealthboard>



All-cause mortality, Yorkshire and North East, 2020

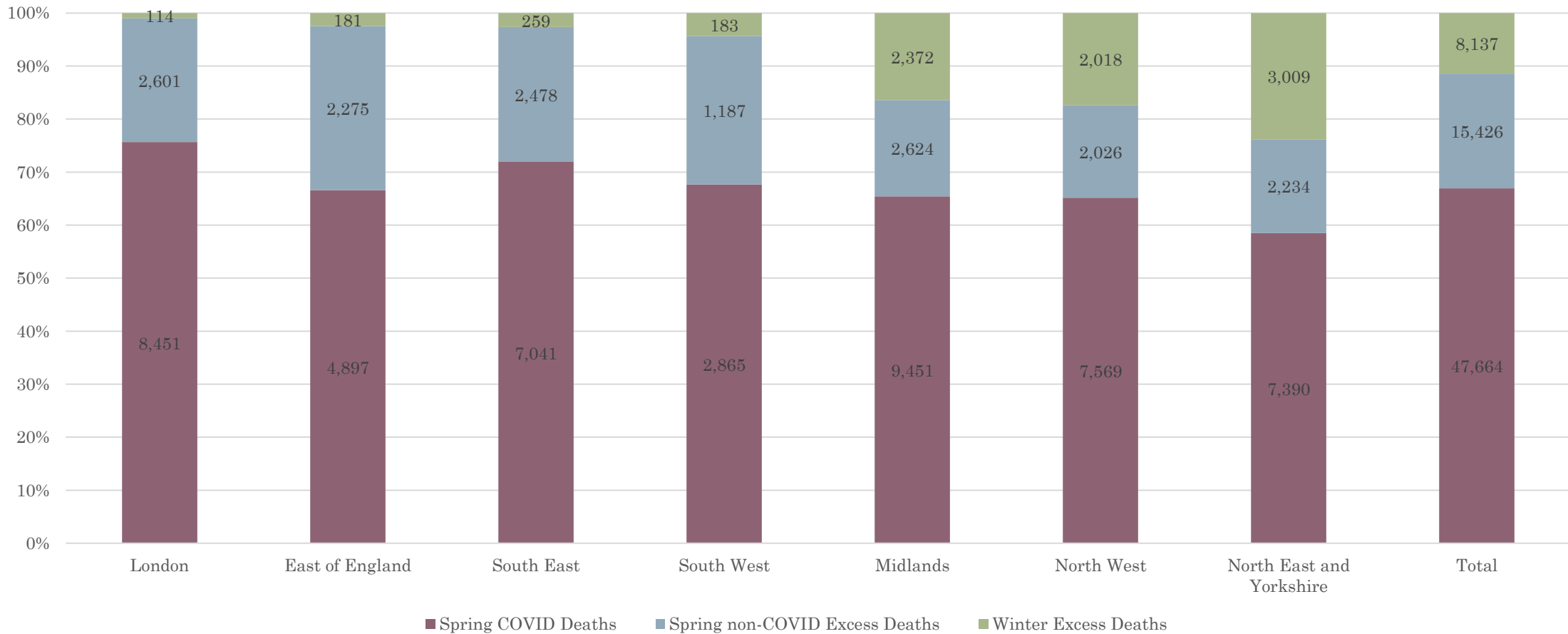
<https://www.ons.gov.uk/peoplepopulationandcommunity/healthandsocialcare/causesofdeath/datasets/deathregistrationsandoccurrencesbylocalauthorityandhealthboard>

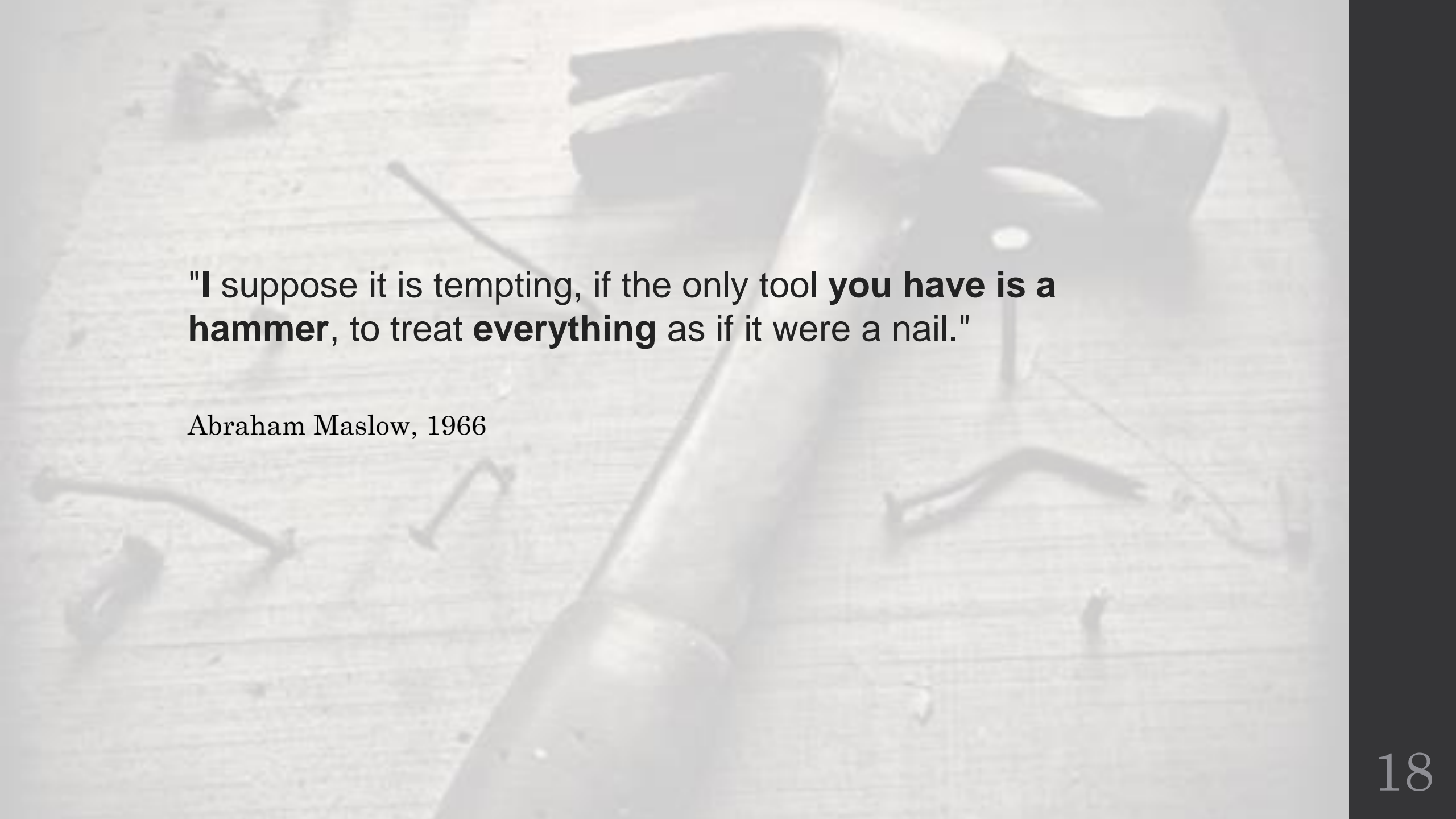


Breakdown of Unexpected Mortality

The Spring COVID epidemic accounted for 48k deaths but there were an additional 15k excess deaths at that time, probably due to disruption of health provision and “do not resuscitate” orders in care homes. There are 8k excess winter deaths that are probably due to COVID.

Breakdown of unexpected mortality in England, 2020



A faded, grayscale background image showing a hammer and several nails scattered on a wooden surface. The hammer is positioned vertically in the center, with its head at the top and handle extending downwards. Several nails are scattered around it, some lying flat and others standing upright. The overall image is semi-transparent, allowing the text to be clearly visible over it.

"I suppose it is tempting, if the only tool **you have is a hammer**, to treat **everything** as if it were a nail."

Abraham Maslow, 1966